

Some Myths & Misconceptions about Nonprofit-Governed Public Libraries in Texas



Disclaimers

- These slides are not intended to be self-explanatory. The speaker's comments during the presentation are necessary for full interpretation of the slides.
- Information in this presentation may not apply to **nonprofit-governed** public libraries outside of Texas.



Intended
for
Advisory
Boards

Public Library Advisory Board Handbook
Revised by Dr. Julie Roturo for 2012
Download the pdf version

Public Library Advisory Board Handbook by Texas State Library & Archives Commission is licensed under a Creative Commons Attribution-NonCommercial-Indefinite 3.0 Unported License.

For permissions beyond the scope of the creative commons license, please contact: tl@tsl.texas.gov.

Page last modified: March 5, 2012

★ Texas State Library and Archives Commission ★

1301 Brazos St., Austin TX 78701 (512) 463-3400 info@tsl.texas.gov P.O. Box 13927, Austin TX 78711-2927

Accessibility: [Assessment](#) [Budget, Planning, Audit & Reports](#) [State of Texas Home](#) [Request Form in Texas](#) [Website Public](#) [Texas Historical Society](#) [Texas Veterans Portal](#) [Texas Veterans Portal](#) [TRAIL Search](#)

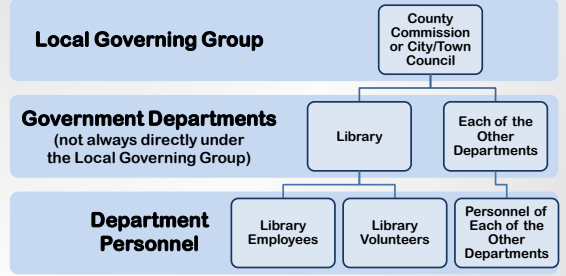
<https://www.tsl.texas.gov/ld/pubs/plant/index.html>

2013 Stats: Nonprofit-Governed Libraries in Texas

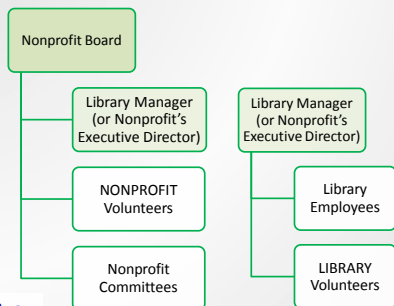
- TSLAC is aware of 557 public libraries in Texas (Libraries with additional outlets, such branches and bookmobiles, county as one each since each is funded from a single source.)
- 87 (15%) of the 557 are **nonprofit-governed**. (Our group includes 2 that are not listed with TSLAC plus one that is not listed as **nonprofit-governed**, so the total number is actually higher.)
- Only 5 of the 87 **nonprofit-governed** libraries are listed as serving populations larger than 25,000. We know that, in the case of at least 2 of those 5 (Lake Cities and Rhome), the size of the actual library community is significantly lower than that of the library's TSLAC-assigned population.
- The largest population is served by Rosenberg Library in Galveston, about 55,000. Second largest is the Lake Cities Library serving about 45,000, and fourth largest is Rhome serving 31,000 (according to TSLAC).



Personnel: Public Libraries that Are Government Departments



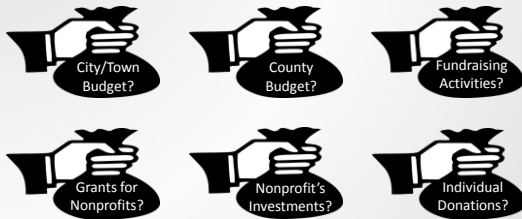
Personnel: Public Libraries Governed by Nonprofits



Where the County/City/Town Library's Money Comes From



Where the Nonprofit Library's Money Comes From



A Board Is A Board?

Media and print items about – as well as training opportunities for – Boards often fail to distinguish between **Governing** and **Advisory** Boards, despite the fact that they are different in many ways.

- **Board of Directors** versus **Board Members**
- Getting on the Board
- **Decisions** versus **Recommendations**
- **Seeking** versus **Recommending** Funding
- Responsibility for Selecting/Retaining the Library Manager
- **Legal Obligations** and **Insurance**



A Library Is A Library?

Academic Public School Special

A Public Library Is A Public Library?

Community Population Governance Type
Geographic Location (Rural, Suburban, Urban)

Public Library Staff Is Public Library Staff?

Private Employees **Government Employees**



“One Size Fits All” ???

Nonprofit-governed public libraries are not misfits ...
they're more like
a horse of a different color!

